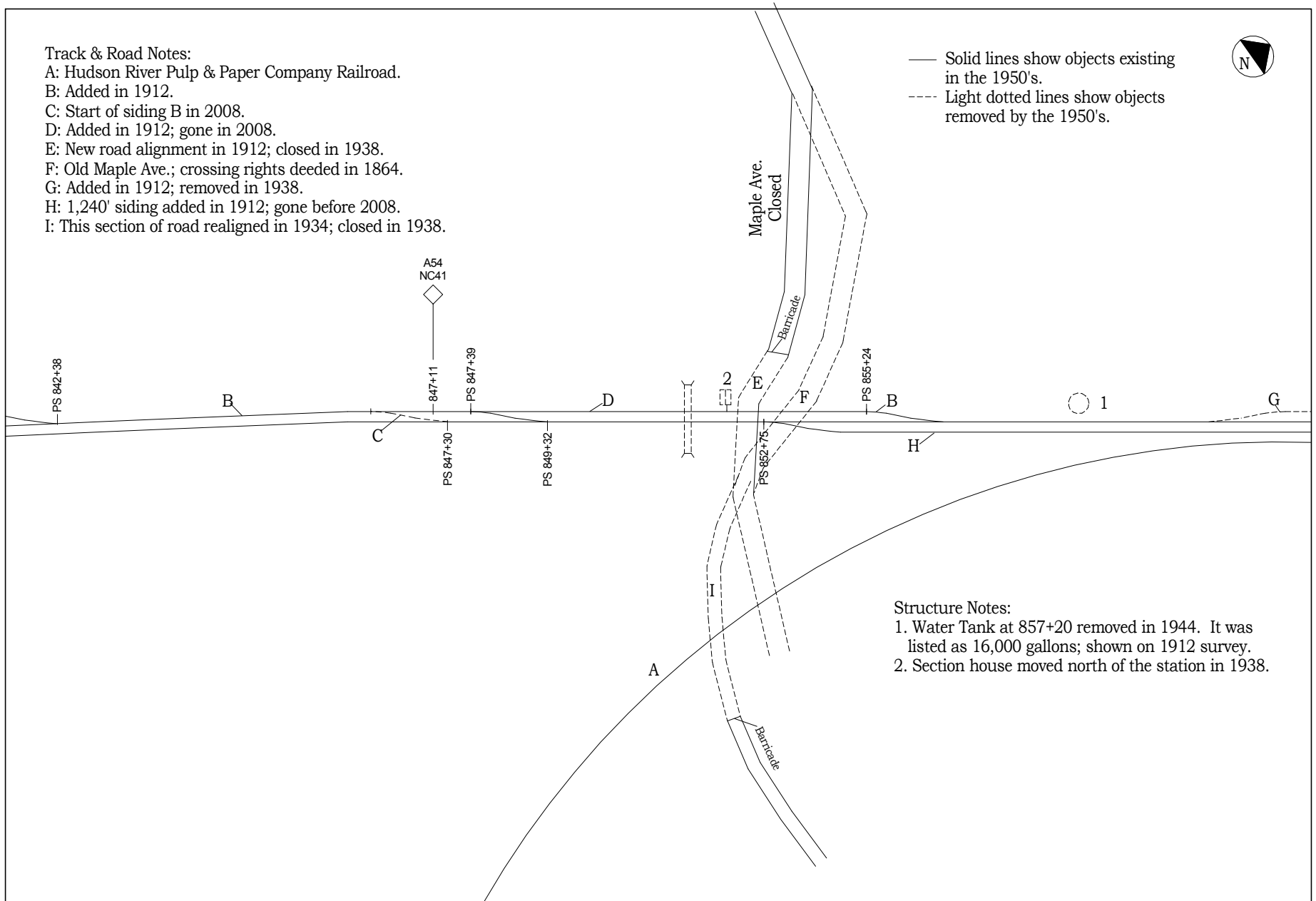


Track & Road Notes:
 A: Hudson River Pulp & Paper Company Railroad.
 B: Added in 1912.
 C: Start of siding B in 2008.
 D: Added in 1912; gone in 2008.
 E: New road alignment in 1912; closed in 1938.
 F: Old Maple Ave.; crossing rights deeded in 1864.
 G: Added in 1912; removed in 1938.
 H: 1,240' siding added in 1912; gone before 2008.
 I: This section of road realigned in 1934; closed in 1938.

— Solid lines show objects existing in the 1950's.
 - - - Light dotted lines show objects removed by the 1950's.



Structure Notes:
 1. Water Tank at 857+20 removed in 1944. It was listed as 16,000 gallons; shown on 1912 survey.
 2. Section house moved north of the station in 1938.

0 20 40 80 140 200
 Scale: 1" = 200'

DELAWARE & HUDSON RAILROAD
 Corinth Yard / Middle

Based on D&H surveys from 1912 & 1921 with updates to 1954.
 Drawn by Jon Patton, revised 1/4/2009.