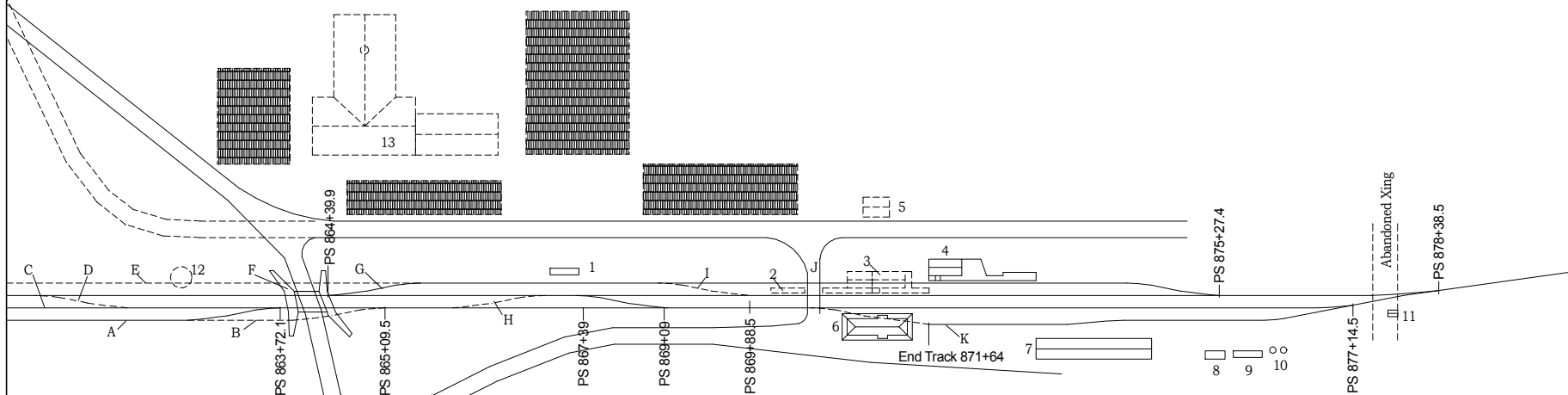




— Solid lines show objects existing in the 1950's.  
 ---- Light dotted lines show objects removed by the 1950's.

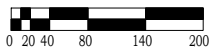


**Track & Road Notes:**

- A: Siding for Hudson River Pulp & Paper Co., c.1869; IP, 1898-2002.
- B: Switch for paper company moved for siding C; moved back to old location in 1938.
- C: 1,240' siding added in 1912; gone by 2008.
- D: Siding end in 2008.
- E: 1,100' siding added in 1912; removed in 1938.
- F: New road alignment and bridge added in 1938.
- G: Siding added in 1938; gone by 1984.
- H: Removed probably in 1938.
- I: Start of new siding E in 1912; removed in 1938.
- J: Old Hamilton Ave. road closed in 1938.
- K: Siding shown on 1891 Atlas & labeled for Standard Oil Co.; shortened for new station in 1911.

**Structure Notes:**

- 1. Oil Tank on 1921 survey.
- 2. Platform seen in c.1900 photos.
- 3. 2 story Station and 1 story freight house built in 1865. The station was changed to just a freight house when the new one was built and by 1928, only the platforms in front of the freight shed remained. The two story end was removed in 1931 and the freight shed was moved for the new siding in 1938.
- 4. New freight shed location in 1938; removed in the late 1980's.
- 5. Open front shed shown in c.1900 photo.
- 6. New Station built in 1911 at a cost of \$8,000. The south end porch was filled in for use as a section house sometime after 1974. Center line = 870+98.
- 7. Warehouse labeled "IP Co" in 1910; not on 1891 plan, removed after 1928.
- 8. Oil Tank on 1912 and 1921 plans.
- 9. Shed on 1921 plan.
- 10. Oil Tanks on 1921 plan.
- 11. Tool House moved here in 1938 from 852+25.
- 12. 16,000 gallon Water Tank built in 1944 and removed in 1954; concrete footings remain in 2008.
- 13. Excelsior mill of E.H. Benway & Co. & pulp wood stacks; early 1900's.



Scale: 1" = 200'

**DELAWARE & HUDSON RAILROAD**  
 Corinth Yard / North End

Based on 1891 Atlas & D&H surveys from 1912 & 1921 with updates to '54.  
 Drawn by Jon Patton, revised 1/4/2009.