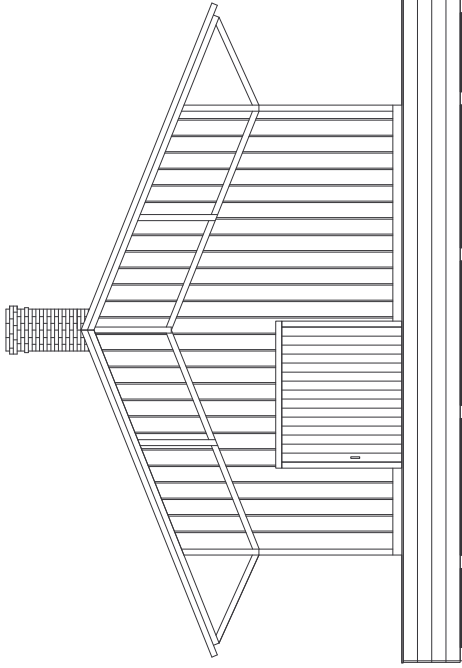
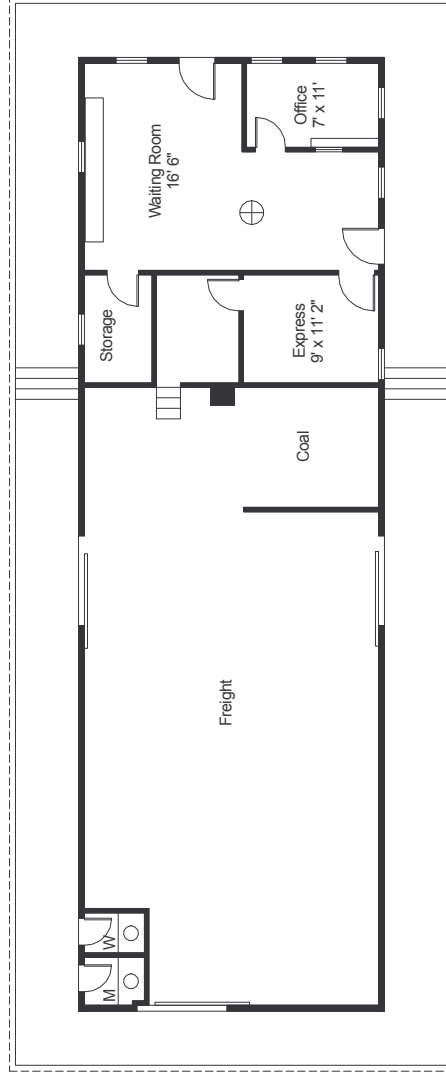


South Elevation



North Elevation



Plan View  
 Scale: 1/16" = 1'  
 Main Building: 79' 3" x 25' 4"



Scale: 3/32" = 1'

DELAWARE & HUDSON RAILROAD  
 The Glen Station

Based on D&H drawing from 1931 & photos / JRP 3/2001  
 as built in 1870