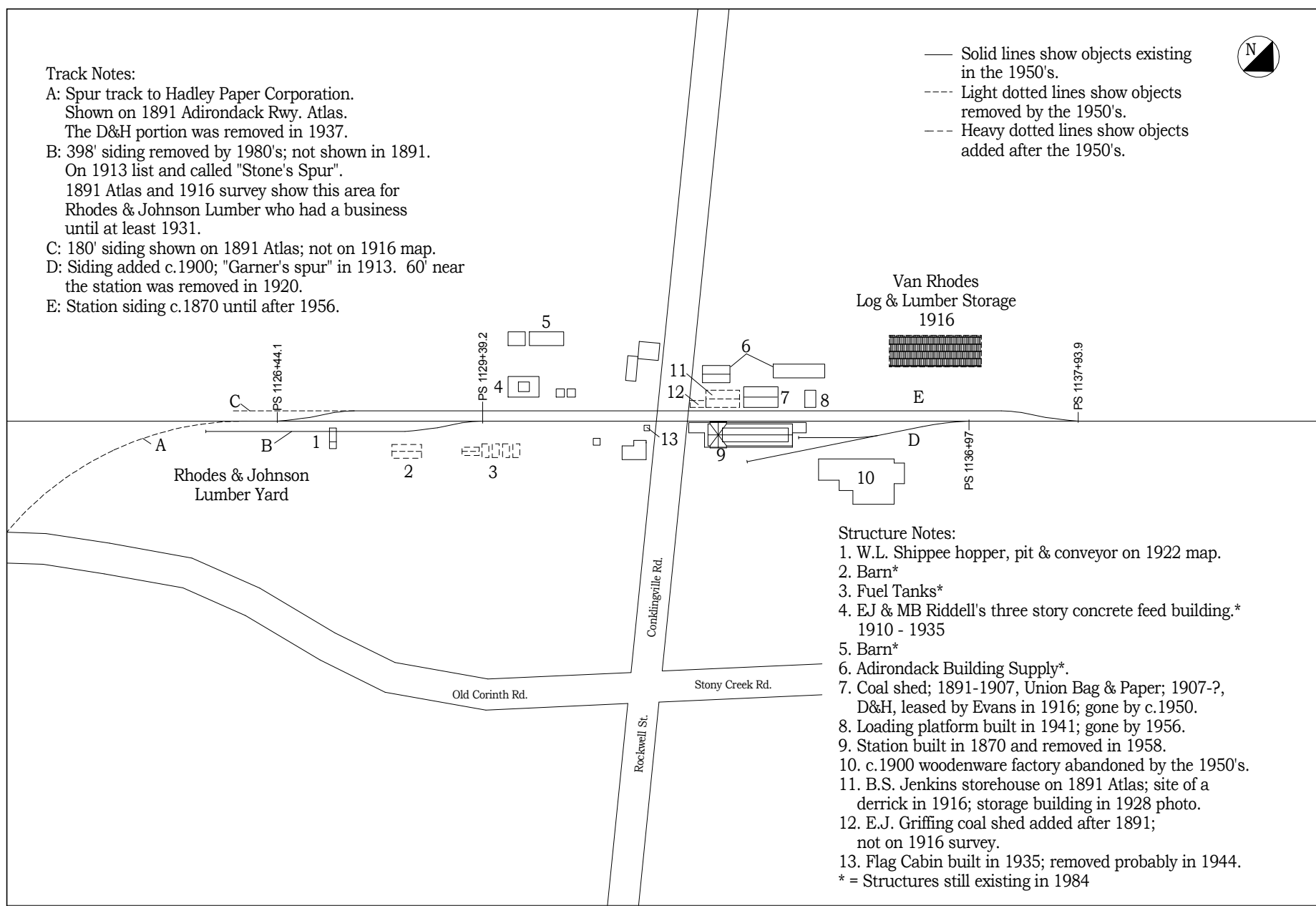




Track Notes:

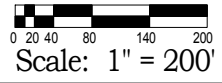
- A: Spur track to Hadley Paper Corporation. Shown on 1891 Adirondack Rwy. Atlas. The D&H portion was removed in 1937.
- B: 398' siding removed by 1980's; not shown in 1891. On 1913 list and called "Stone's Spur". 1891 Atlas and 1916 survey show this area for Rhodes & Johnson Lumber who had a business until at least 1931.
- C: 180' siding shown on 1891 Atlas; not on 1916 map.
- D: Siding added c.1900; "Garner's spur" in 1913. 60' near the station was removed in 1920.
- E: Station siding c.1870 until after 1956.

- Solid lines show objects existing in the 1950's.
- - - Light dotted lines show objects removed by the 1950's.
- - - Heavy dotted lines show objects added after the 1950's.



Structure Notes:

- 1. W.L. Shippee hopper, pit & conveyor on 1922 map.
 - 2. Barn*
 - 3. Fuel Tanks*
 - 4. EJ & MB Riddell's three story concrete feed building.* 1910 - 1935
 - 5. Barn*
 - 6. Adirondack Building Supply*.
 - 7. Coal shed; 1891-1907, Union Bag & Paper; 1907-?, D&H, leased by Evans in 1916; gone by c.1950.
 - 8. Loading platform built in 1941; gone by 1956.
 - 9. Station built in 1870 and removed in 1958.
 - 10. c.1900 woodenware factory abandoned by the 1950's.
 - 11. B.S. Jenkins storehouse on 1891 Atlas; site of a derrick in 1916; storage building in 1928 photo.
 - 12. E.J. Griffing coal shed added after 1891; not on 1916 survey.
 - 13. Flag Cabin built in 1935; removed probably in 1944.
- * = Structures still existing in 1984



DELAWARE & HUDSON RAILROAD
Hadley Station

Based on 1891 Atlas, 1916 & 1921 D&H surveys & photos.
 Drawn by Jon Patton, revised 2/18/2009.