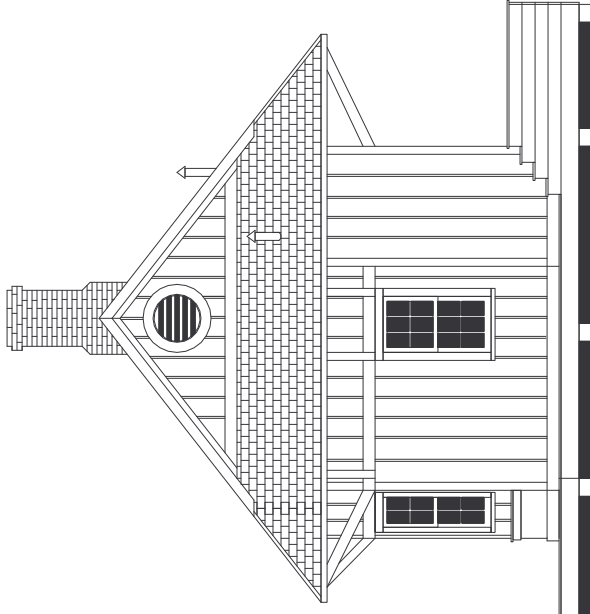
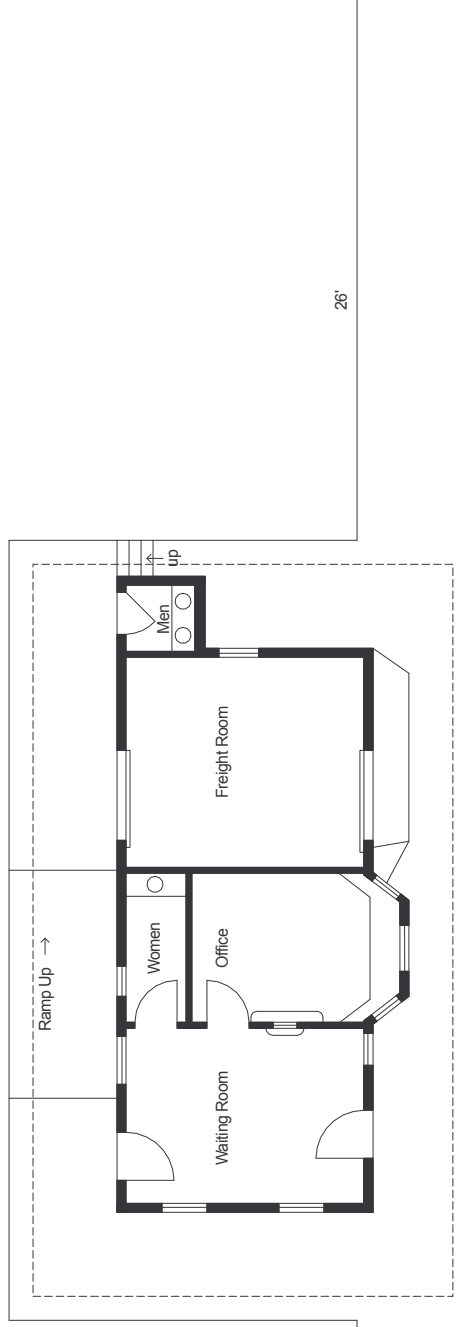


South Elevation



North Elevation



Main Building
14' 4" X 31' 0"

Scale of Plan: 3/32" = 1'

50' 6"

6' 6"

26'



Scale: 1/8" = 1'

DELAWARE & HUDSON RAILROAD
South Corinth Station

Based on D&H drawing from 6/22/31 and photos

Built in 1880